



# NORTH AMERICAN ARMS INC

MINI-REVOLVER OPERATION AND SAFETY MANUAL



NORTH AMERICAN ARMS MINI REVOLVERS

## ABOUT THIS MANUAL

Congratulations on your purchase of a North American Arms (NAA®) mini-revolver! This handgun has been manufactured in the United States from the finest available materials by a team of highly-trained & long-experienced craftsmen. Before leaving the factory, your handgun was thoroughly inspected and test fired to assure you years of reliable, trouble-free service.

This manual was written to provide you with information regarding the safe operation specific to this handgun. It is critically important that you become familiar with this handgun and its features before loading it. As the owner, you are responsible for the safe use and storage of this handgun.

If you have any questions regarding the operation or safe handling of this handgun, you are invited to contact our team, either by email to: [customerservice@northamericanarms.com](mailto:customerservice@northamericanarms.com) or by calling the factory at 800-821-5783.

## WARRANTY

*All North American Arms® firearms carry a lifetime warranty to the original registered owner which covers defects in materials, workmanship, and mechanical function. This warranty does not cover normal wear or damage resulting from neglect, abuse, customizing or repairs not made by NAA®.*

*You can register this gun with the factory either by returning the enclosed card or by visiting our site: [www.northamericanarms.com](http://www.northamericanarms.com).*

*Under the terms of this warranty, NAA® will repair or replace, at its option, the handgun or any part thereof, without charge, provided that the handgun is returned pre-paid to the factory.*

*NAA® does not cover return shipping on firearms manufactured more than two years prior to the factory's manufactured date of this handgun.*

*Disassembly of this handgun beyond that required for loading and unloading will render this warranty null and void.*

*NAA® strongly recommends that you record and store the serial number for this firearm.*

## STATEMENT OF LIABILITY

**WARNING! All NAA® mini-revolvers are classified as dangerous weapons; therefore NAA surrenders this handgun with the understanding that no liability whatsoever is assumed by NAA® for its resale, safe handling nor compliance with existing State or Federal laws and regulations by future recipients.**

**Further, NAA® accepts no liability for personal injury or loss of property or life resulting from the use of this handgun under any circumstances, including intentional discharge, reckless conduct, negligence, or accidental discharge of this handgun nor the function of this handgun when subjected to influences beyond the control of North American Arms® .**

### **WARNING! WASH HANDS AFTER HANDLING!**

**This product contains one or more chemicals (including lead) known to the state of California to cause cancer and birth defects or other reproductive harm. For more information, go to:  
[www.P65 Warnings.ca.gov](http://www.P65Warnings.ca.gov)**

## SAFE OPERATIONS

All NAA® mini-revolvers are designed with safe operation in mind. However, because of their small size, particular care must be taken while handling this handgun. Strict attention must be paid to all the basic rules of firearms safety. All fingers must be kept behind the muzzle and away from the cylinder-barrel gap. Before loading or firing this handgun, read this manual thoroughly, making sure that you understand the operations of the handgun and assuring that you have rehearsed and are entirely familiar with the functioning of the safety slot. *The traditional half-cock (first hammer stop) position is not intended to serve as a safety; its purpose is solely as an aid to loading and unloading.*

This manual is intended to be used for the following NAA® revolvers: The 1860 Earl, The Hogleg, The 1860 Sheriff, .22 Magnum, .22 Long Rifle, .22 Short, The Mini-Master, The Black Widow, and The Pug. For any other models, refer to their respective owner's manuals.

## **WARRANTY CARD**

Please detach the warranty card along the perforated line that is provided.

Complete all sections of the warranty card with your information. No envelope or stamp is required as the card is prepaid; simply mail it out.

Alternatively, you may also choose to fill out the warranty registration online by visiting our website at [www.northamericanarms.com](http://www.northamericanarms.com).

For any inquiries regarding warranty registration, please reach out to our customer service team at our toll-free number: 1-800-821-5783 or via email at [customerservice@northamericanarms.com](mailto:customerservice@northamericanarms.com).

## THE SAFETY SLOT

For years, the conventional way to safely carry a single-action revolver (like an NAA® mini-revolver) was to rest the hammer over the top of an empty chamber in the cylinder. The reason was to eliminate the risk that, in the event that the gun was dropped or the hammer was otherwise struck, energy would be transferred to a cartridge and a round would accidentally discharge.

NAA's engineers designed a solution that did not require one fewer round in the cylinder. They began to mill a small notch (**the safety slot**) in the rim of the cylinder. The blade of the hammer is then fit into that notch and any energy or impact on the hammer is then harmlessly transferred to the wall of the cylinder instead of the rim of the cartridge. When the hammer is cocked, the cartridge simply and automatically aligns itself into proper battery.

***By engaging the hammer in the safety slot, there is no threat of accidental discharge and the revolver can be loaded to full capacity.***



***WE RECOMMEND THAT YOU PRACTICE THE FOLLOWING PROCEDURE SEVERAL TIMES WITH AN UNLOADED MINI-REVOLVER.***

- To engage the hammer blade into a safety slot, the hammer is slowly pulled back beyond the half-cock position until the cylinder turns freely. Make absolute certain that you have full control of the hammer and that it does not slip from your grasp, falling forward.
- Rotate the cylinder to a position where the hammer is aligned with a safety slot.
- While holding the hammer securely, ***fully squeeze the trigger*** and lower the hammer slowly forward into a safety slot. Do not squeeze the trigger unless the hammer is aligned with the safety slot. You must continue to squeeze the trigger until the hammer is firmly and fully seated in a safety slot.
- Make certain that the hammer blade is resting securely in a safety slot and that the cylinder does not rotate.



**HAMMER IS IN SAFETY SLOT**



**HAMMER IS ON LIVE CARTRIDGE**

- Closely study the photographs to identify the proper engagement of the safety slot. Take particular notice of the orientation of the chambers in the cylinder.

- For any further inquiries about the use of the safety slot, please reach out to [customerservice@northamericanarms.com](mailto:customerservice@northamericanarms.com) for extra assistance or see the online instructional video found on our website: [www.northamericanarms.com](http://www.northamericanarms.com).

## **DANGER**

*This handgun may discharge if it is dropped or struck on the hammer with a live round under the hammer, or if the thumb slips while cocking or uncocking the handgun with the trigger depressed.*

*Do not carry this handgun with the hammer resting above a live cartridge or in the half-cock position.*

*To make an accidental discharge impossible, place the hammer in the safety slot immediately after loading and after finishing firing.*

## LOADING

### **MINI-MASTER, BLACK WIDOW, PUG**

*(Before loading, practice the following steps by hand motions only)*

- To remove the cylinder, first place the hammer in the half-cock position.
- Pull the cylinder pin block down.
- Turn the cylinder pin block 90 degrees.

(See figure 2)

- Slide the cylinder pin block out of the gun in the direction of the muzzle end of the barrel. The cylinder can now be easily removed from either side of the gun.

- After loading the cylinder with five rounds, reverse the above procedure to insert the cylinder, making sure the cylinder pin seats firmly against the frame & locked in its groove for proper functioning. After firing, follow the same procedure to unload. Use the cylinder pin for extracting empty cases.



### **"THE EARL", "THE HOGLEG"**

*(Before loading, practice the following steps by hand motions only)*

- To remove the cylinder, first place hammer in the half-cock position.

- Your quality "The Earl" revolver is equipped with a faux or 'false' loading lever in keeping with the 1860's - era styling of this piece. Instead of being used to seat a bullet into a cylinder chamber (as it is on black powder revolvers), "The Earl's" loading lever is cosmetic. Its real function is to secure the grooved cylinder pin which it captures against the frame.

To remove the cylinder for loading and unloading, the lever is lowered and the pin is pulled in the direction of the muzzle.

To lower the lever, simply pull rearward on the spring-loaded latch at the muzzle end to gain access to the cylinder pin. The cylinder can now be easily removed from either side of the firearm.

- After loading the cylinder with five rounds, reverse the above steps to insert the cylinder, making sure the cylinder pin seats firmly against the frame for proper functioning. Raise the loading lever back to its closed position and insert the latch back into its grooved slot under the barrel. Pull down on the loading lever slightly to ensure that it is securely locked into position.



## **"1860 SHERIFF"**

*(Before loading, practice the following steps by hand motions only)*

- To remove the cylinder, push upward on the grooves on the bottom of the cylinder pin (releasing the hook from the frame) and slide the pin outward along the base of the barrel, releasing the pin entirely from the gun. After replacing the loaded cylinder back into the frame, line up the center hole of the frame and slide the pin through the hole (with the grooved part of the cylinder facing down).



Slide the cylinder pin all the way back until it clicks back into place.

After firing, follow the same procedure to unload. Use the cylinder pin to extract empty cases.

## **(.22 MAGNUM, .22 LONG RIFLE, .22 SHORT)**

*(Before loading, practice the following steps by hand motions only)*

- To remove the cylinder, first place hammer in the half-cock position.  
- Grasp the knurled portion of the cylinder pin between the thumb and middle finger, depress the release button with the forefinger to the inward position and withdraw the pin completely. The cylinder can now be easily removed from either side of the gun.

- After loading the cylinder with five shells, insert the cylinder, making sure the cylinder pin seats firmly against the frame for proper functioning. After firing, follow the same procedure to unload. Use the cylinder pin for extracting empty cases.

## **FIRING**

To fire the revolver, draw the hammer back as far as possible, making sure that it locks in the fully cocked position before removing your thumb from the hammer.

Actual firing is done by pulling the trigger. Note that, due to the small physical size of the mini-revolver, you must ensure that neither the thumb nor any fingers impede the rotating action of the cylinder or the cocking of the hammer. Make sure cylinder is properly rotated to the locked position each time you cock the gun.

Practice the cocking action with an empty cylinder before firing live ammunition. **Excessive dry firing is to be avoided!**



## MAINTENANCE

As with other fine revolvers, the mini requires care when it is used. It is recommended that the bore and chamber be cleaned gently after firing and coated with a very light film of oil.

## AMMUNITION

Verify and use only .22 Long Rifle ammunition in those revolver cylinders chambered for .22 Long Rifle. Your Magnum Frame gun can be fitted with a Long Rifle Conversion Cylinder chambered specifically for either LR/S rounds, which is stamped on the muzzle end "L." For best results using Long Rifle ammunition, NAA® recommends: CCI, Federal or Remington brands .22 Long Rifle ammunition.

Any .22 caliber Winchester Magnum Rimfire (WMR) ammunition can be used in this Magnum mini-revolver— **EXCEPT "PMC" & "ARMSCOR PRECISION" BRANDED .22 CALIBER AMMUNITION (Magnum and/or LR), WHICH HAS RESULTED IN OUT-OF-BATTERY DISCHARGES.**

**WARNING! DO NOT USE ANY "PMC" OR "ARMSCOR PRECISION" BRANDED AMMUNITION IN ANY NAA Mini-Revolver!**

**NAA® does not recommend the use of commercially available VARMINT ammunition with Mini-Revolvers. Because of the Minis' size and the pressures VARMINT rounds create, the casings may swell and jam and/or cause interference with the cylinder's rotation.**

You are additionally cautioned NOT to use any .22 caliber Long Rifle (LR) or Short (S) ammunition in a Magnum (WMR) cylinder.

**WARNING STATEMENT: Discharging firearms in poorly ventilated areas, cleaning firearms, and/or handling ammunition may result in exposure to lead and other substances known to the State of California to cause birth defects, reproductive harm, and other serious physical injury. Have adequate ventilation at all times. Wash hands thoroughly after exposure.**

NAA® STRONGLY RECOMMENDS that all NAA® firearms be carried in an appropriate holster— even/especially when carried in a purse or pants pocket.

If you ever have any questions about the information contained in this manual or the safe operations of your NAA® firearm, please feel free to contact the factory for immediate and personal customer support.



Scan for Accessories

**NORTH AMERICAN ARMS INC<sup>®</sup>**  
**2150 SOUTH 950 EAST | PROVO, UT 84606**  
**800-821-5783 OR 801-374-9990**  
**WWW.NORTHAMERICANARMS.COM**

# SIDEWINDER/SENTINEL INSTRUCTION CARD

## LOADING/CRANE OPERATION

To load the firearm, first place the hammer into half-cock position (pulling the hammer back roughly 1/8 of an inch, until you hear the first "click"). You will see that the hammer is not resting on the frame and that the hammer blade/firing pin is no longer protruding through the firewall. If the hammer is NOT in half-cock, the cylinder is locked inside the frame.

Holding the gun in your left hand with the muzzle pointing to the right (in a safe direction), pull the knurled cylinder pin "forward", to the right, towards the muzzle, away from the cylinder.

While pulling the cylinder pin fully forward, roughly 1/8 of an inch (the spring-loaded retaining nub is now fully compressed within the within the cylinder pin by the barrel-mounted pin retention tab) use the left-hand index finger to push the cylinder from behind, towards the user, out of the right side of the firearm. The cylinder crane will move the cylinder away from the frame of the firearm and will stop with the crane reaching about an 80 degree angle, almost perpendicular to the frame. This will allow you to load the gun.

After loading the cylinder with five shells, rotate the crane assembly and cylinder back into the frame of the firearm, making sure that the knurled pin does not interfere with/overlap with the pin retention tab (the spring-loaded retaining nub will be compressed as the cylinder returns to the frame).

Press firmly on the cylinder crane until the cylinder returns fully within the frame and the knurled pin is fully seated in the retaining slot.



**IMMEDIATELY INSERT THE HAMMER INTO A SAFETY SLOT.  
HALF-COCK IS NOT A SAFETY. PRACTICE THE COCKING ACTION  
WITH AN EMPTY CHAMBER BEFORE FIRING LIVE AMMUNITION.  
EXCESSIVE DRY-FIRING CAN DAMAGE YOUR FIREARM.**

Safety/Loading/Unloading video instructions can be found on our website: [northamericanarms.com](http://northamericanarms.com) as well as our Youtube account.

## UNLOADING

Follow the same procedure described for loading to lower the crane assembly and cylinder away from the frame.

Pressing the cylinder pin towards the cylinder will cause the star in the cylinder to back the spent shells out of the cylinder for removal. Make sure to rotate the cylinder slightly so that when ejecting the star the shells will clear the right cylinder shroud.

Good maintenance for our swing-out models will involve thoroughly cleaning the cylinder crane assembly pin with a cleaning brush.

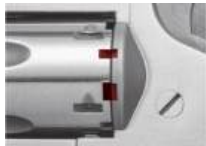


## EXCHANGING CYLINDERS

Make sure the gun is unloaded. Rotate cylinder out of the frame (see loading). Remove the screw at the front of the frame (4) and remove cylinder assembly. Make certain star fits FLAT on the back of the cylinder (star can shift on shipment). Insert cylinder assembly in frame and reattach screw making sure that the screw is seated firmly against the frame.

## SAFETY CYLINDER

Holding the gun in your right hand (with the muzzle pointed in a safe direction), retract the hammer to the first point where the cylinder rotates freely (just beyond half-cock). When the large and small slots on the cylinder align with the corresponding large and small slots on the recoil shields, a cylinder safety slot will be right underneath the hammer. With your thumb fully controlling the hammer, depress and hold the trigger fully until the hammer rests fully against the frame with the hammer blade engaged in the safety slot (the cylinder should not rotate more than a degree or two in either direction).



# BREAK-TOP/RANGER INSTRUCTION CARD

## LOADING YOUR BREAK-TOP FIREARM

To load the firearm, first put the hammer in half-cock position. Pull the serrated frame latch back towards the hammer.

When the frame latch clears the barrel latch, the barrel/cylinder assembly should pivot freely. You can now load your weapon.

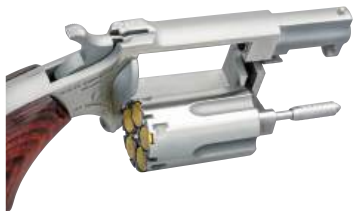
To close: simply ensure that the cylinder rests fully forward against the barrel and that the hammer is in the half-cock position. Close the assembly gently and then press firmly against the barrel latch assuring that the frame latch is fully closed and sits firmly against the top strap.

***Do not pull back the frame latch (#28) to close barrel. Immediately insert the hammer into a safety slot; half-cock is NOT a safety.***

To load the firearm, first put the hammer in half-cock position. Pull the serrated frame latch back towards the hammer.

When the frame latch clears the barrel latch, the barrel/cylinder assembly should pivot freely. You can now load your weapon.

To close: simply ensure that the cylinder rests fully forward against the barrel and that the hammer is in the half-cock position. Close the assembly gently and then press firmly against the barrel latch assuring that the frame latch is fully closed and sits firmly against the top strap.



Safety/Loading/Unloading video instructions can be found on our website: [northamericanarms.com](http://northamericanarms.com) as well as our Youtube account.

## UNLOADING

Follow the same procedure described for loading to lower the crane assembly and cylinder away from the frame.

Pressing the cylinder pin towards the cylinder will cause the star in the cylinder to back the spent shells out of the cylinder for removal. Make sure to rotate the cylinder slightly so that when ejecting the star the shells will clear the right cylinder shroud.

Good maintenance for our swing-out models will involve thoroughly cleaning the cylinder crane assembly pin with a cleaning brush.



## EXCHANGING CYLINDERS

Make sure the gun is unloaded. Rotate cylinder out of the frame (see loading). Remove the screw at the front of the frame (4) and remove cylinder assembly. Make certain star fits FLAT on the back of the cylinder (star can shift on shipment). Insert cylinder assembly in frame and reattach screw making sure that the screw is seated firmly against the frame.

## SAFETY CYLINDER

Holding the gun in your right hand (with the muzzle pointed in a safe direction), retract the hammer to the first point where the cylinder rotates freely (just beyond half-cock). When the large and small slots on the cylinder align with the corresponding large and small slots on the recoil shields, a cylinder safety slot will be right underneath the hammer. With your thumb fully controlling the hammer, depress and hold the trigger fully until the hammer rests fully against the frame with the hammer blade engaged in the safety slot (the cylinder should not rotate more than a degree or two in either direction).

